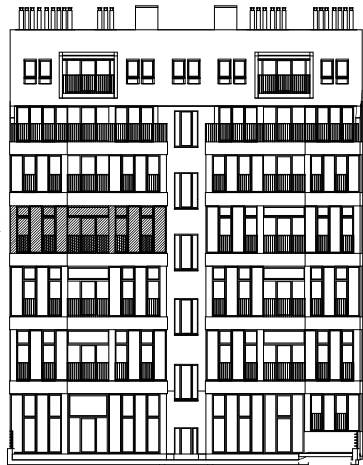
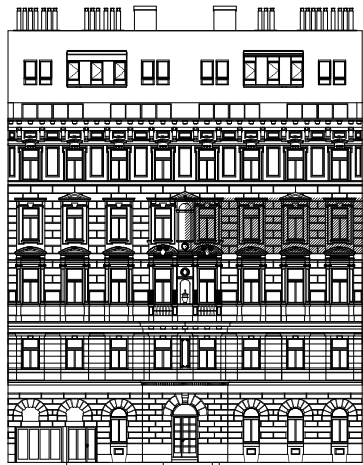


2. Stock

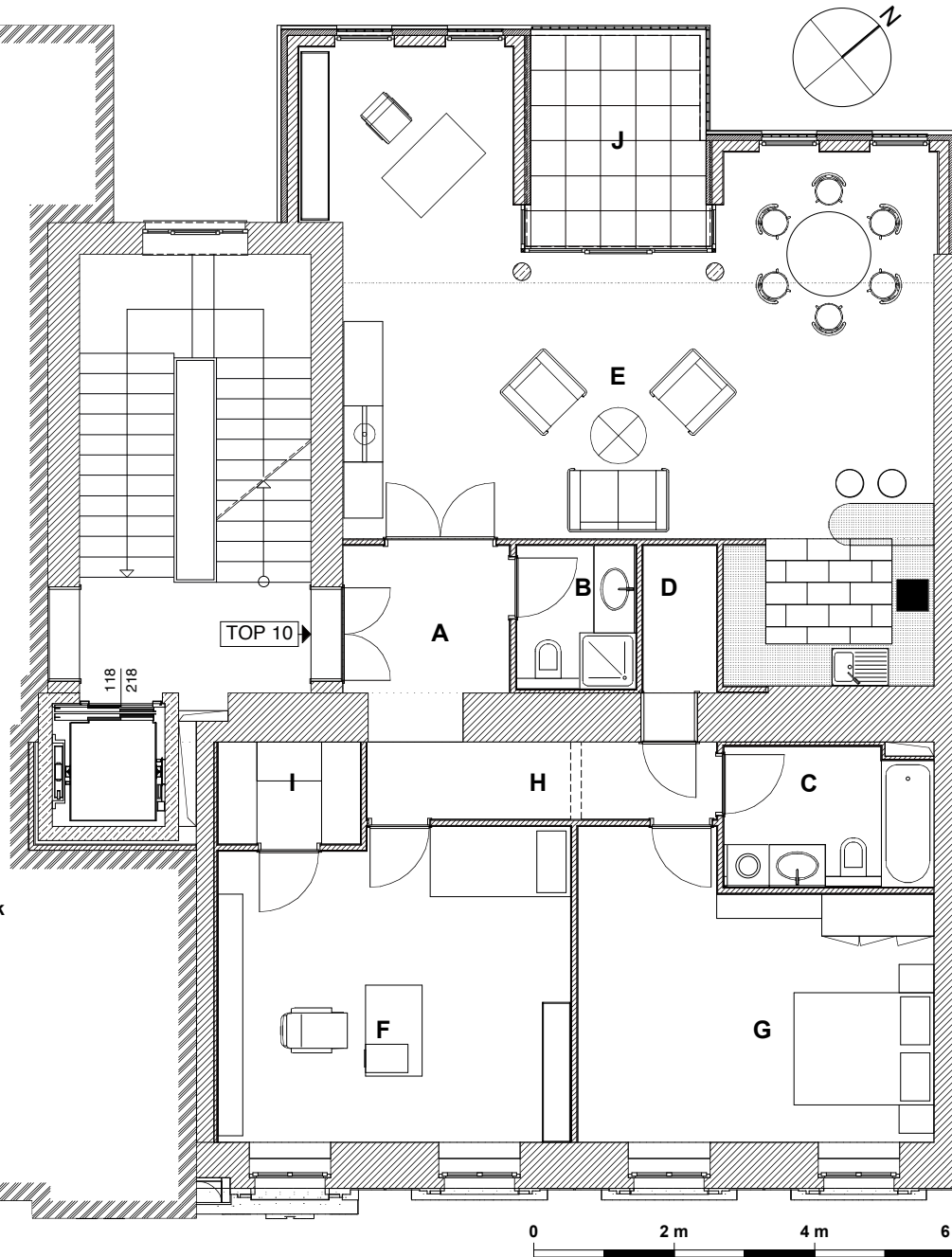


Ansicht Hofgarten



Ansicht Kundmannngasse

2. Stock



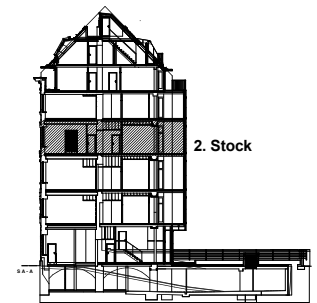
Big Space B

TOP 10 / 2. Stock

| | | |
|-------------------|-------------|------------------|
| A | Vorzimmer | 5,21 m2 |
| B | WC / Dusche | 3,54 m2 |
| C | Bad | 5,05 m2 |
| D | AR | 2,37 m2 |
| E | Wohnküche | 54,17 m2 |
| F | Zimmer | 20,62 m2 |
| G | Zimmer | 20,49 m2 |
| H | Gang | 6,39 m2 |
| I | Garderobe | 2,37 m2 |
| Wohnfläche | | 120,21 m2 |
| J | Loggia | 7,70 m2 |

LUTZ WEBER IMMOBILIEN

A-1010 Wien
 Seilerstätte 10 / 23
 tel. (01) 6410656
 mail : office@lutzweber.at



Schnitt A - A