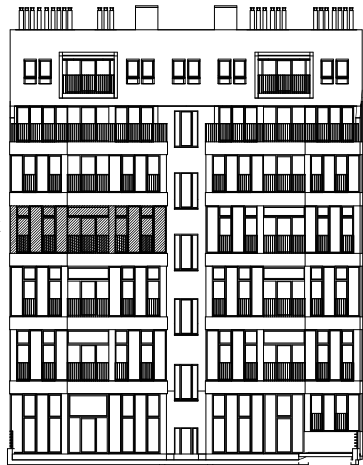
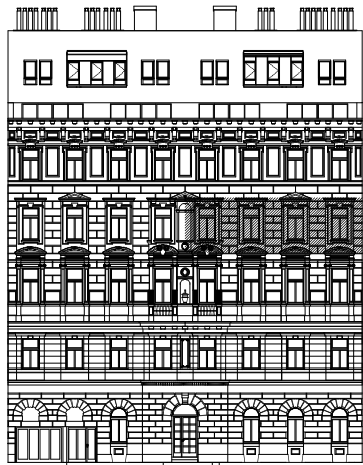


2. Stock

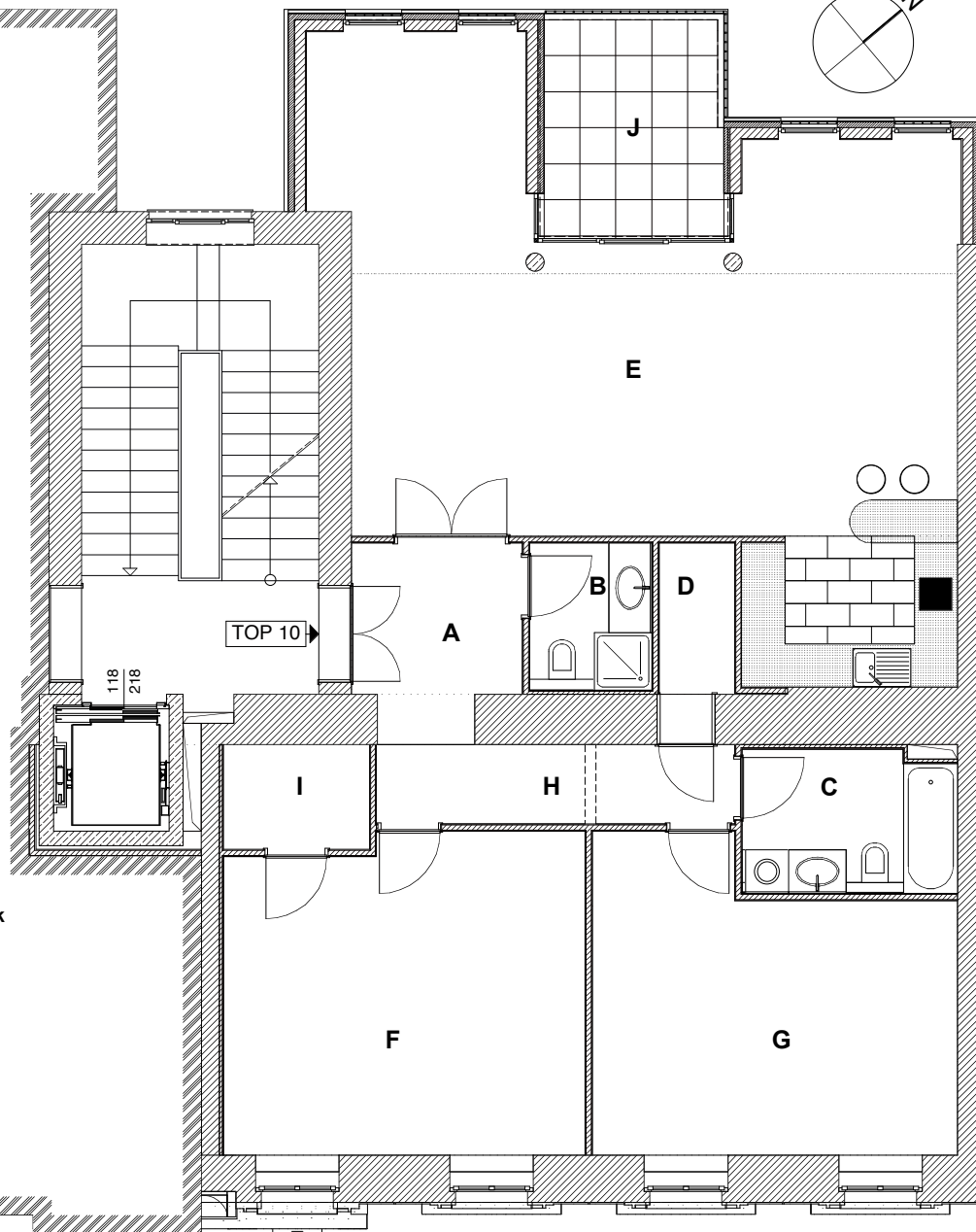


Ansicht Hofgarten



Ansicht Kundmannngasse

2. Stock



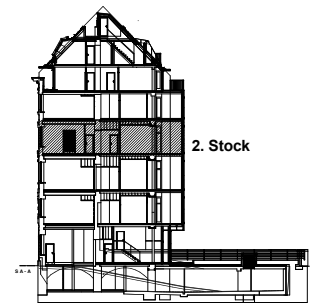
Big Space B

TOP 10 / 2. Stock

A	Vorzimmer	5,21 m ²
B	WC / Dusche	3,54 m ²
C	Bad	5,05 m ²
D	AR	2,37 m ²
E	Wohnküche	54,17 m ²
F	Zimmer	20,62 m ²
G	Zimmer	20,49 m ²
H	Gang	6,39 m ²
I	Garderobe	2,37 m ²
Wohnfläche		120,21 m²
J	Loggia	7,70 m ²

LUTZ WEBER IMMOBILIEN

A-1010 Wien
 Seilerstätte 10 / 23
 tel. (01) 6410656
 mail : office@lutzweber.at



Schnitt A - A